

Bayfield County Forestry & Parks Department

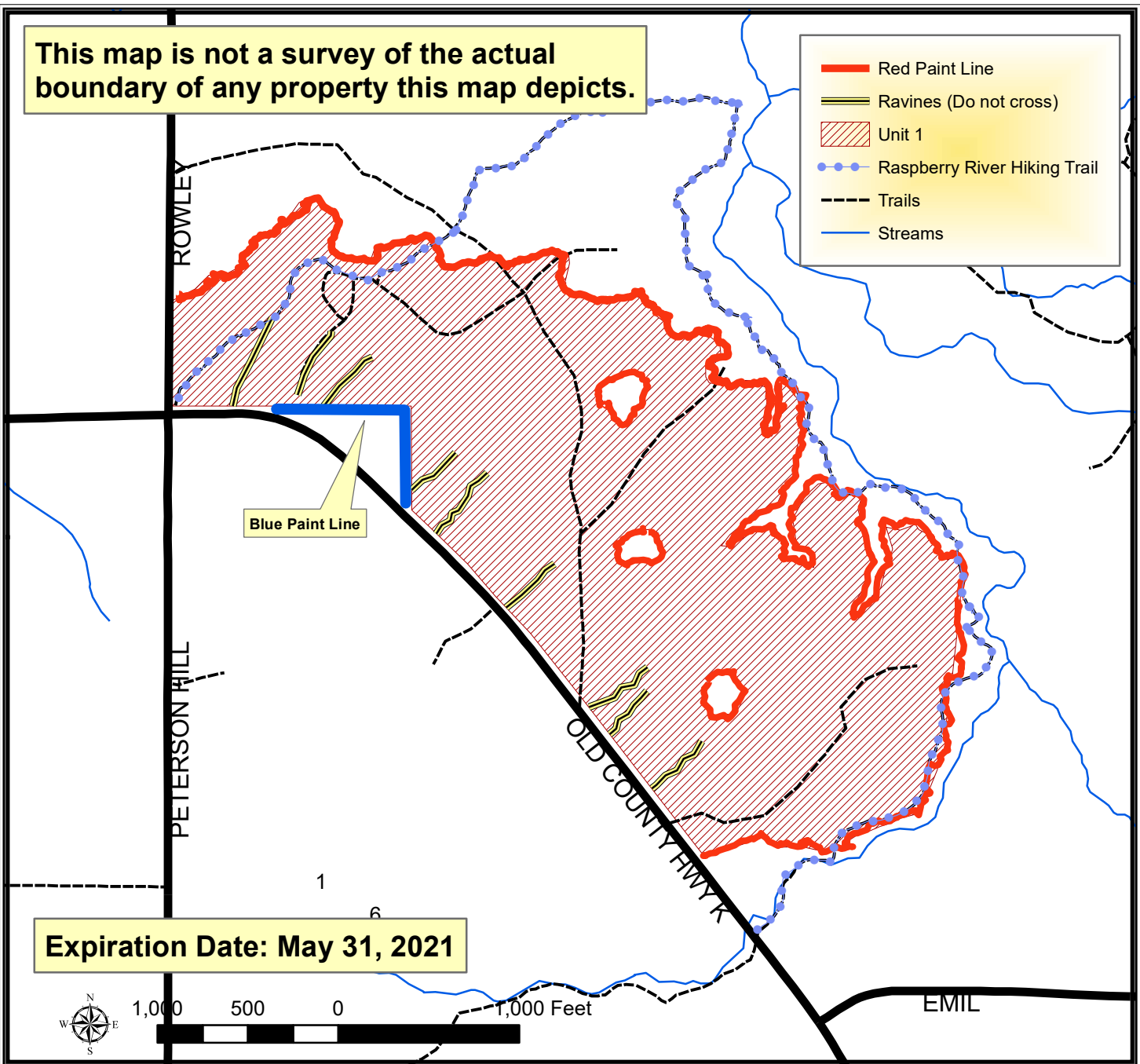
Forester: Mike Amman			Compartment: 8	Stand: 29	Tract Number: 42-20
Twp: 51N	Range: 4W	Sec: 11	Township: Russell	Contract Number:	
Topography: Gently Rolling			Reforestation Code: N/A	Soil: Clay, Clay loam	Acres: 165

Estimated Volumes			
Species	Whole Tree (Tons)	4" Roundwood (Cords)	Sawlogs (MBF)
Aspen	9556	2905	
Mixed Hardwood*	3266	933	
White Birch	874	249	
Fir	654	193	

*Approx. 76% maple, 13% yellow birch, 6% oak, and 5% ash

The aspen is 40 years old and the average diameter is 7 inches.

Special Restrictions:
 >Good summer chance throughout, but a wet fall may require frozen ground conditions on portions of the sale.



TRACT 42-20 – HARVEST REQUIREMENTS

The following terms and conditions supplement those provided in the Bayfield County Timber Sale Contract.

A. PRESCRIPTION:

1. Unit 1: Harvest is a salvage coppice prescription with an estimated average residual basal area of 8 ft².

B. HARVEST REQUIREMENTS:

1. Unit 1:
 - i. Harvest all hardwood and fir/spruce 2" in diameter and greater except leave all healthy oak. Healthy oak trees in this case means trees that are not root sprung, snapped off, or bent over. Leave all cedar, pine, and hemlock.

C. OPERATIONAL REQUIREMENTS AND SEASONAL RESTRICTIONS:

1. Sale boundaries are red line, blue line, and roads.
2. Good summer chance for harvest throughout, but a wet fall may require frozen ground conditions on portions of the sale.
3. There are number of small drainages as noted on the map that are near old hwy K that are not painted on the ground where harvesting as much of the timber is encouraged without crossing or entering these drainages with equipment. Stay 15' away from the top of each drainage when reaching to utilize as much would in the actual drainage.
4. If harvest will utilize the whole tree, 1 in 10 tops must be left scattered throughout the sale.

D. ACCESS AND ROADS:

1. Limited new roads will be needed.

E. OTHER:

1. Approximately 44% of the total volume within this sale have been damaged in some way as a result of a windstorm on July 18. Damage includes root sprung trees, snapped off trees, and various levels of bent over trees.
2. There are 3 reserve islands that are painted out in red paint. Do not harvest any trees within these units.
3. The blue line indicates private property. No equipment or felled trees may cross the line
4. To comply with Best Management Practices for Invasive Species: Prior to moving equipment onto or off the sale area, scrape or brush soil and debris from exterior surfaces to the extent practical.
5. The Raspberry River hiking trail runs through this sale. Keep all slash 15' away from the trail and do not cut healthy trees marked with blue paint marking the trail.
6. This sale contract will expire on **May 31, 2021**.

