

# Dynamics Of Coastal Erosion

Philip Keillor, Coastal Engineer,  
University of Wisconsin Sea  
Grant Institute

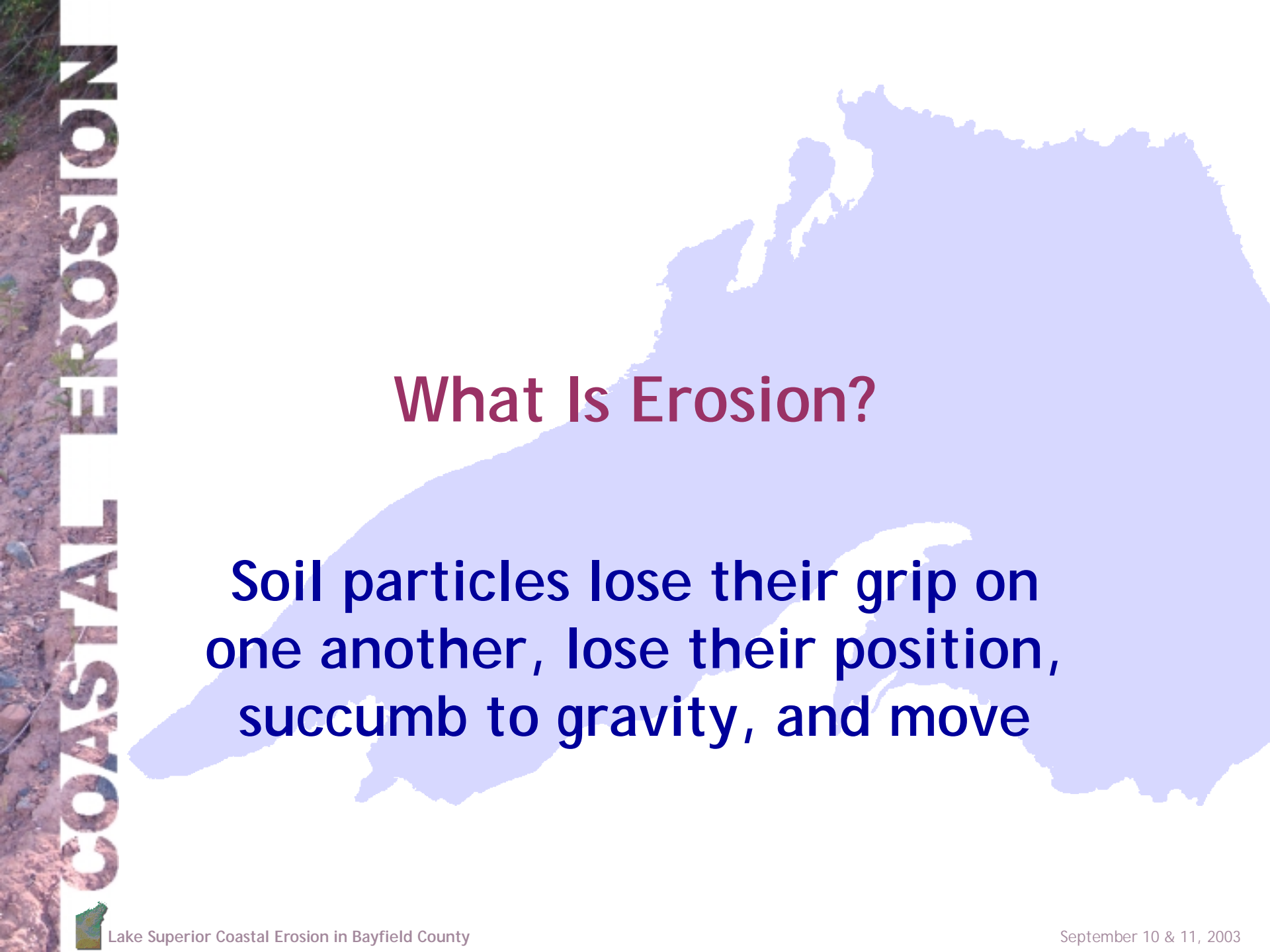


**All graphics in this presentation  
come from**

**“LIVING ON THE COAST”**

**A pending publication of the U.S. Army  
Corps of Engineers and the University of  
Wisconsin Aquatic Sciences Center**





## What Is Erosion?

Soil particles lose their grip on one another, lose their position, succumb to gravity, and move

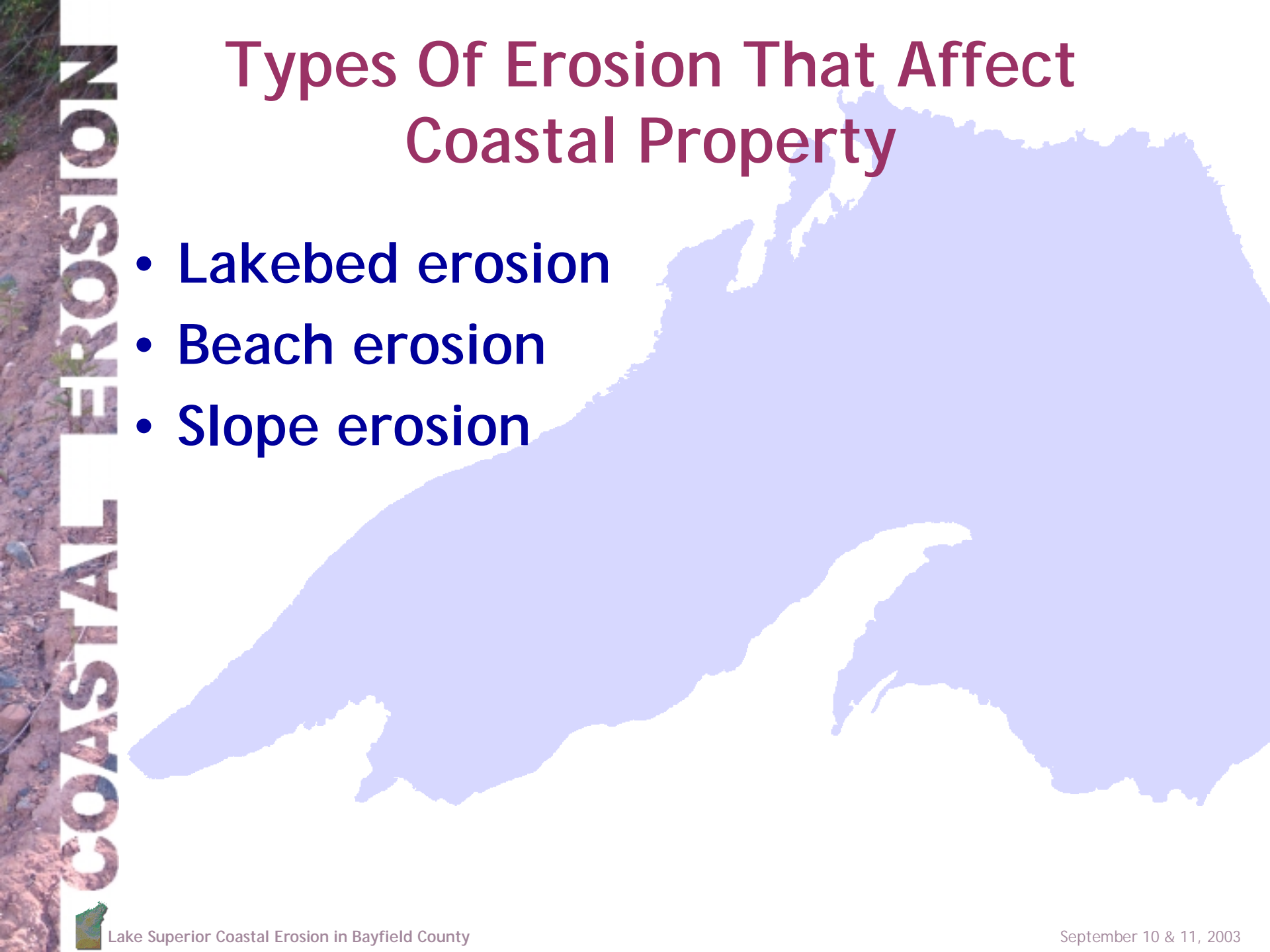




# Forces At Work To Cause Erosion

- Gravity
- Ground water
- Surface water
- Freezing and thawing
- Wind
- Waves



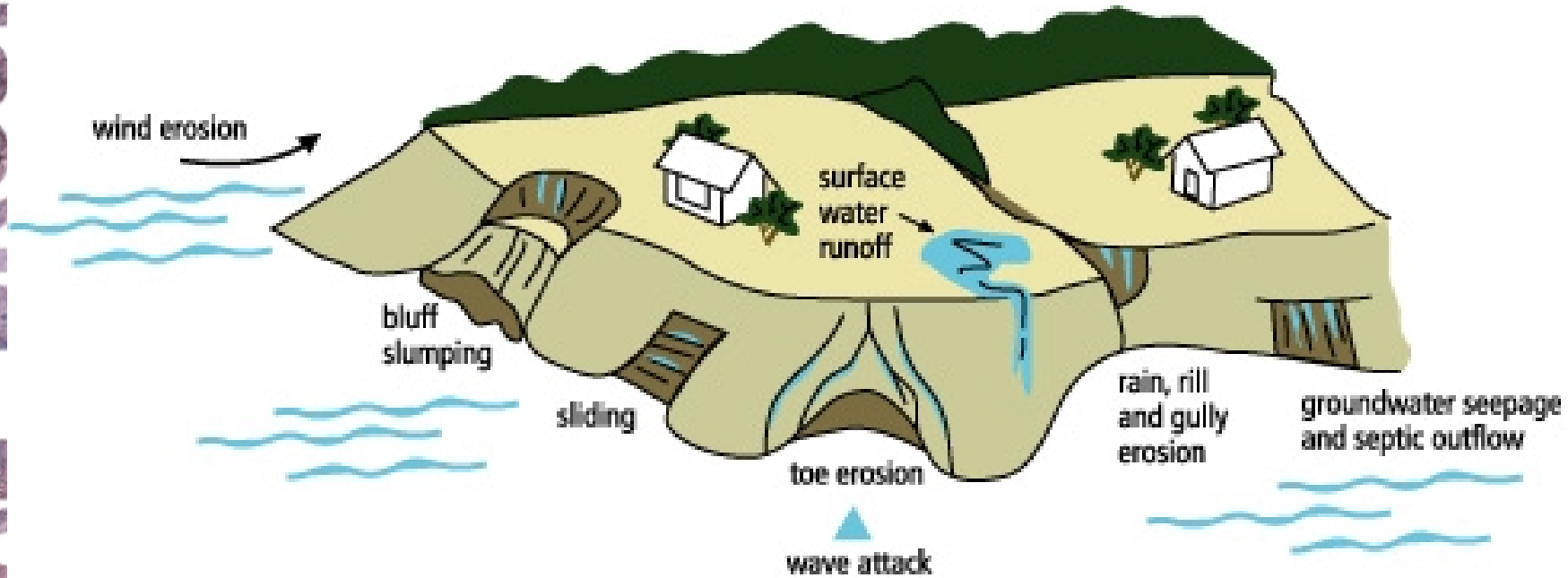


# Types Of Erosion That Affect Coastal Property

- Lakebed erosion
- Beach erosion
- Slope erosion



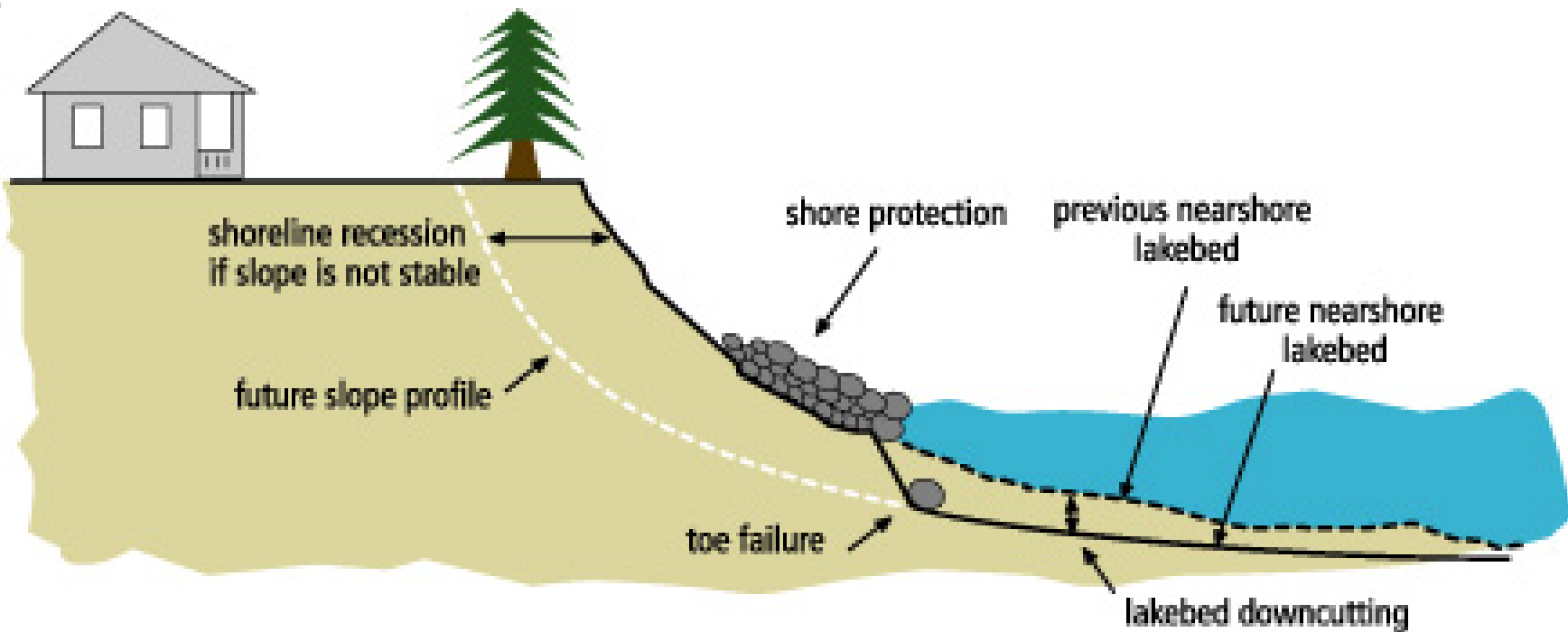
# Causes Of Coastal Erosion



Causes and Effects of Coastal Erosion



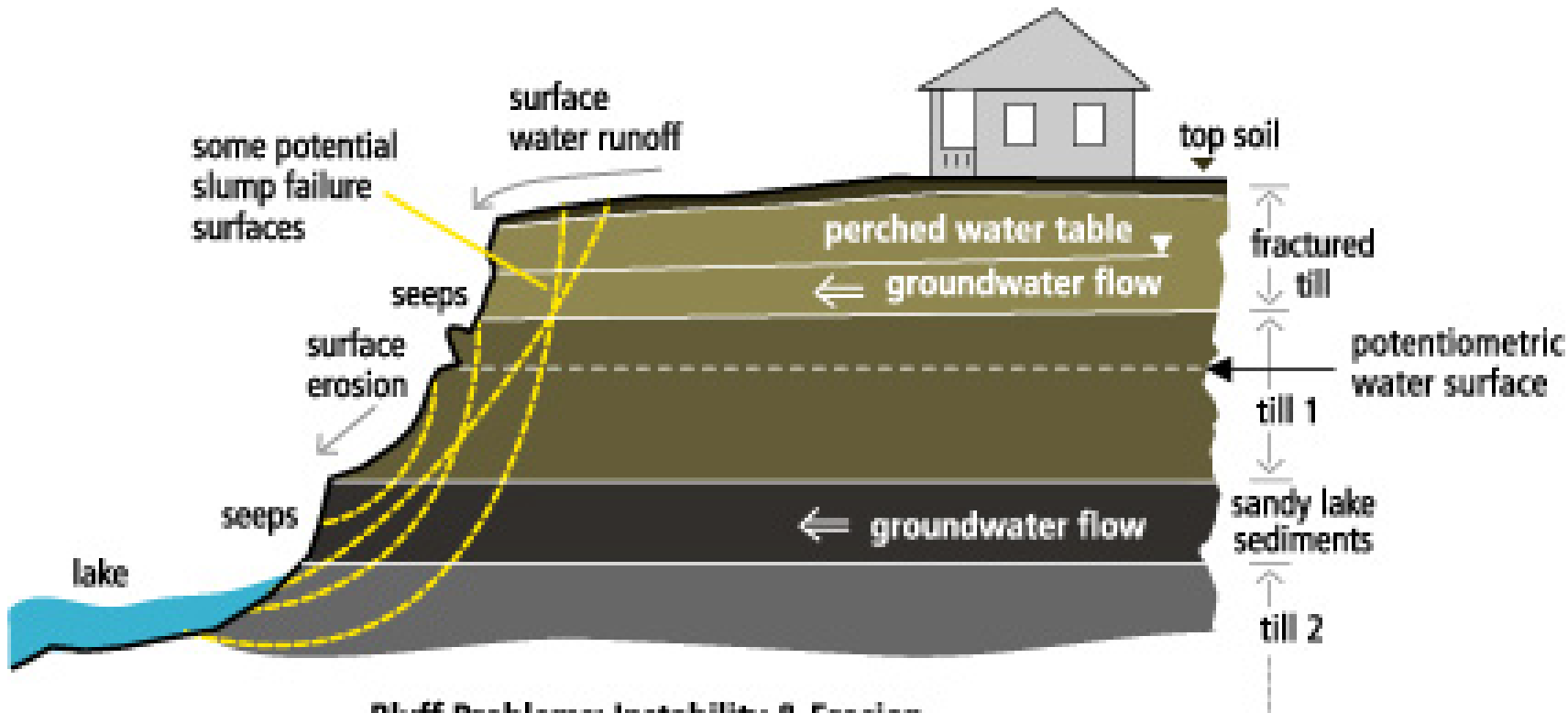
# COASTAL EROSION



**Lakebed Erosion with Slope Recession and Failure of Shore Protection Structure**



# Water And Erosion In And On A Coastal Slope



**Bluff Problems: Instability & Erosion**  
**Surface Water Runoff Groundwater Seepage**



# A Special Concern On Wisconsin's Lake Superior Coast:

## Soil Creep





# Understanding Erosion On Lake Superior Is A Work In Progress

**COASTAL EROSION**

