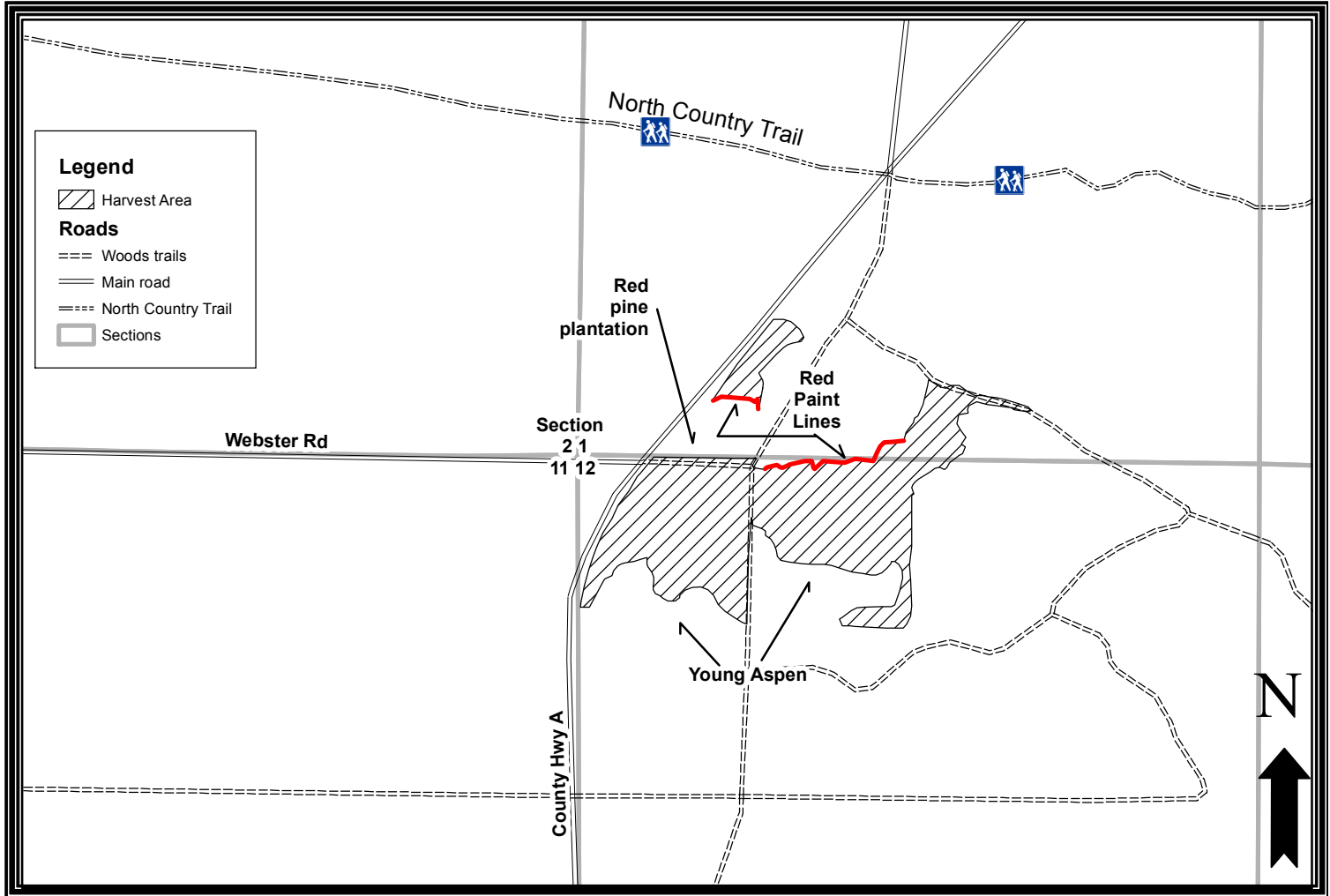


Bayfield County Forestry and Parks

Forester: LeBouton		Twp: 46N	Range: 9W	Sec: 1 & 12	Estimated Volumes:		
Acres: 61	Regen Code: PJ Seeding	Township: Hughes			Species	Cords 4" top	WT Tons
Soil: Sand		Compartment: 131 Stands 2 & 3			Jack Pine	880	2400
Topography: Flat to moderate slope		Tract Number: 17-13			Aspen	190	570
Scale: 4" = 1mile		Contract Number:			MX*	90	300
					Avg Diameters: Jack pine = 11"; Aspen = 10"; Red maple = 6" *1/3 red maple, 2/3 scrub oak		



Harvest requirements:

- This is a ticket sale.
- If the harvest will utilize the whole tree, one in ten tops must be left scattered throughout the sale.
- Cutting unit boundaries are red paint lines in the two places indicated, otherwise boundaries are abrupt changes in forest type or forest age.
- Cut all trees 2 inches DBH and greater.
- Cut all snags.
- Do not damage any survey monumentation.
- To comply with Best Management Practices for Invasive Species, prior to moving equipment on to or off the sale area, scrape or brush debris and soil from exterior surfaces.
- All roads are in place. This contract requires county authorization for all road/landing construction and places a number of other requirements on road construction and closure.
- Decking of wood along town roads will not be allowed without permission of Bayfield County.
- Harvested pine cannot be kept on the Bayfield County Forest for more than three weeks from May 1st to August 31st.