

# Bayfield County Forestry & Parks Department

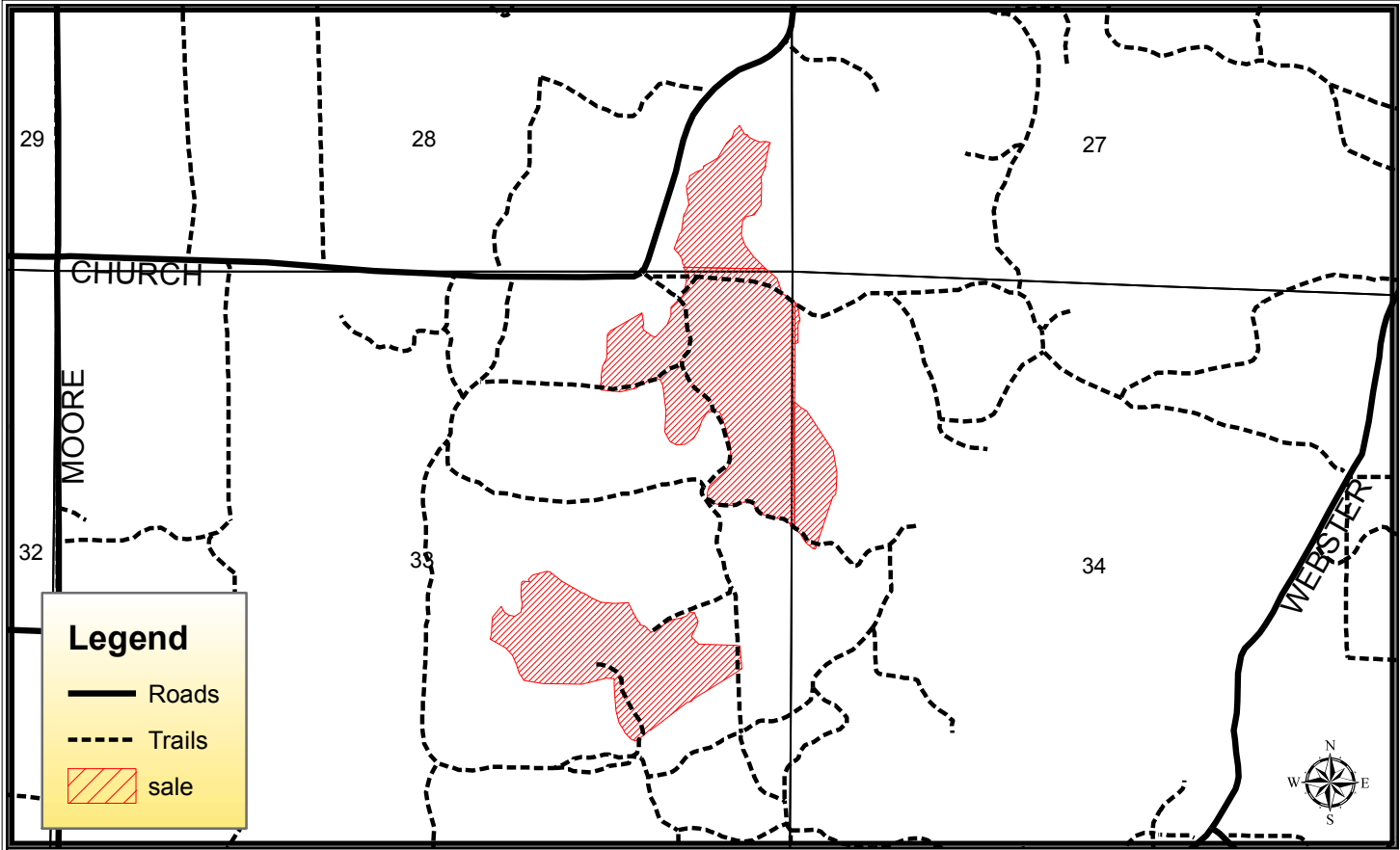
Forester: Amman, Holmes			Acres: 73	Estimated Volumes	
Twp: 46N	Range: 9W	Sec: 28,33,34	Compartment: 148,152,153		
Township: Barnes			Stand: 4,6,12		
Soil: Sand		Reforestation Code: AR-PJ	Tract Number: 19-13		
Topography: rolling			Contract Number:		

Species	Whole Tree Tons
Red Pine	3413
Aspen*	571
Scrub Oak	465
Jack Pine	392

16" avg. DBH Red Pine  
\* 97% Aspen, 3% White Birch

4 inches = 1 mile



**Harvest Requirements:**

- Sale is a clearcut being sold on a Ticket Scale Basis
- Sale boundaries are red paint line
- Sale must be whole tree harvested. 1 in 10 tops must be left scattered throughout the sale
- Harvest all merchantable trees. Sever all stems 2" in diameter and greater
- Harvested pine cannot be kept on the Bayfield County Forest for more than three weeks from May 1<sup>st</sup> to August 31<sup>st</sup>
- All snags must be cut
- To comply with the Best Management Practices for Invasive Species: Prior to moving equipment onto or off of the sale area, scrape or brush soil and debris from exterior surfaces to the extent practical
- This contract requires County authorization for all road/landing construction and places a number of other requirements on road construction and closure

---